



NIR-A-LS1 product introduction

2022/8/15



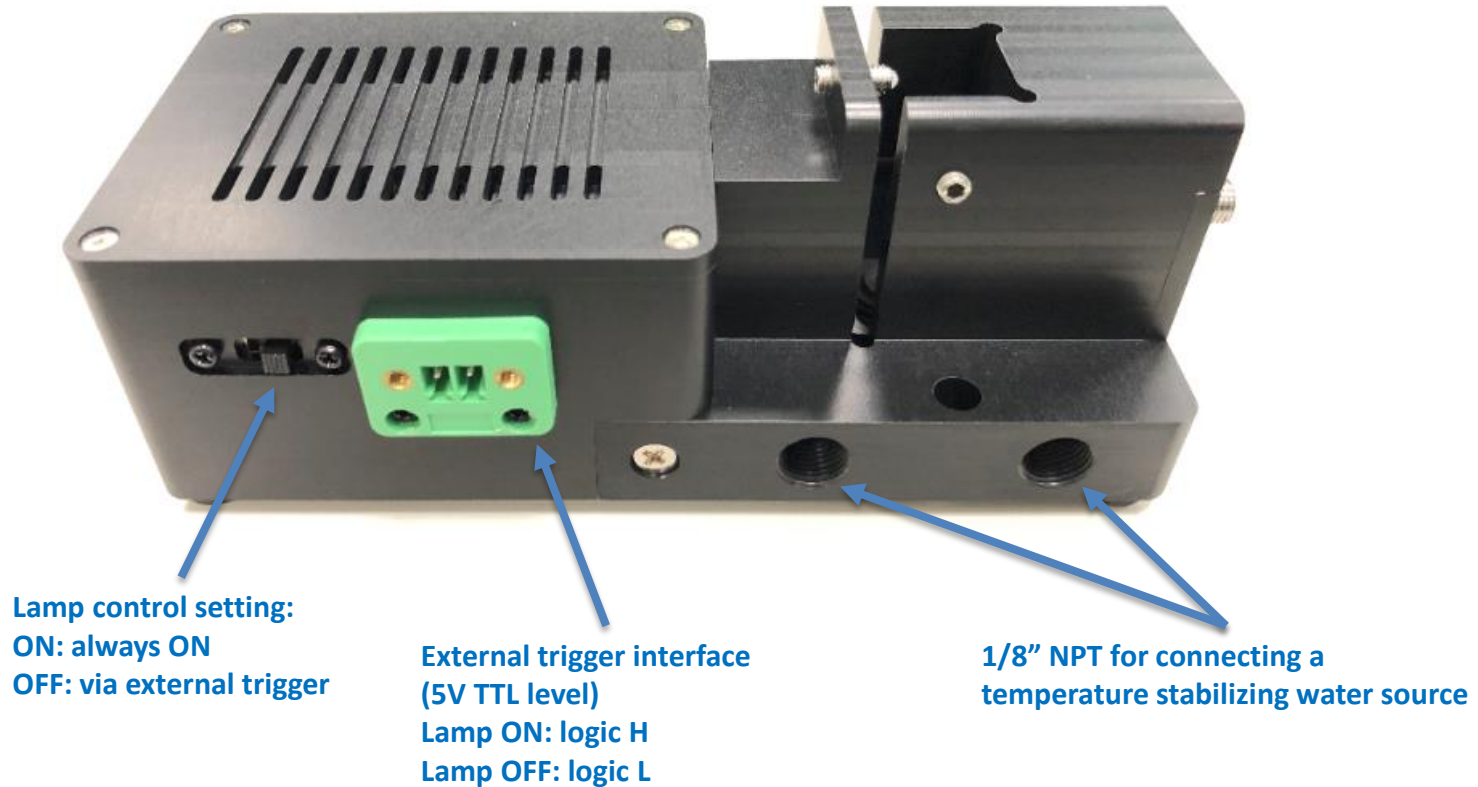
Responsibility Innovation Superiority Entrepreneurship

Product Highlights



- Lamp type: miniature xenon, user replaceable
- Lamp CCT: 2600K
- Lamp power: 5W
- Lamp life hours: 10,000
- Fiber connector: SMA905
- Cuvette holder path length: 10mm
- Cuvette holder Z-dimension: 15mm, adjustable
- Lamp control: Always on or via external trigger
- Lamp external trigger input: 5V TTL input
- Cooling fan: integrated
- Water input fittings: 1/8" NPT for connecting a temperature stabilizing water source
- Time to stabilize: approximately 20 minutes
- Power supply: DC 5V/2A
- Dimensions: 149x64x54mm
- Weight: 520g
- Operating Temperature: 0 ~ 40 °C, RH Max. 85%

Appearance & Interface



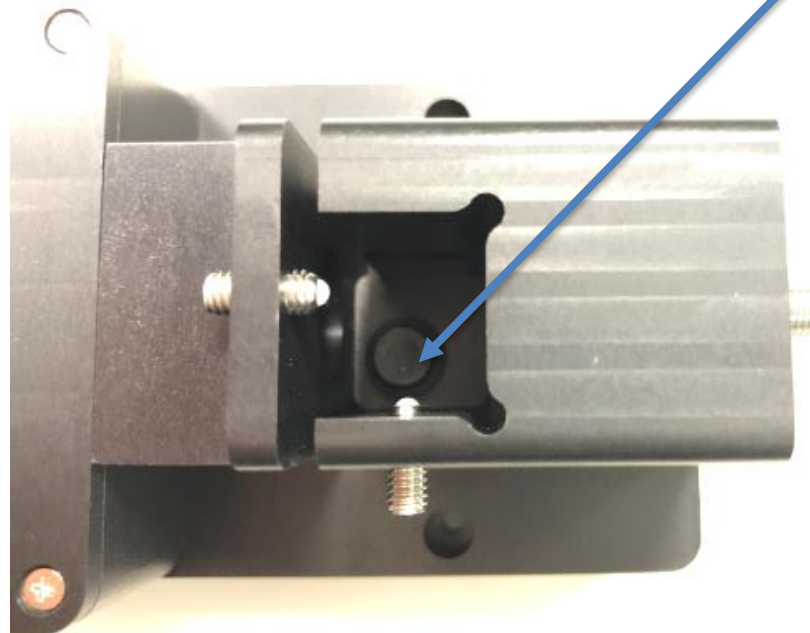
Appearance & Interface



Appearance & Interface



For Z-dimension adjustment

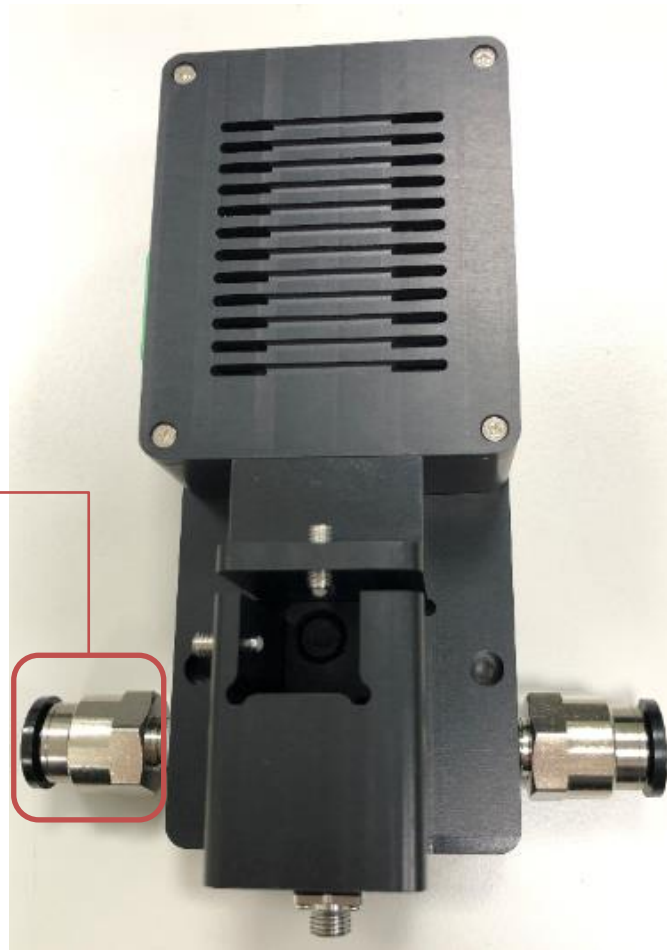


Appearance & Interface

Users need to purchase by themselves according to the specifications request and the water pipe planned to use

Connecting a temperature stabilizing water source

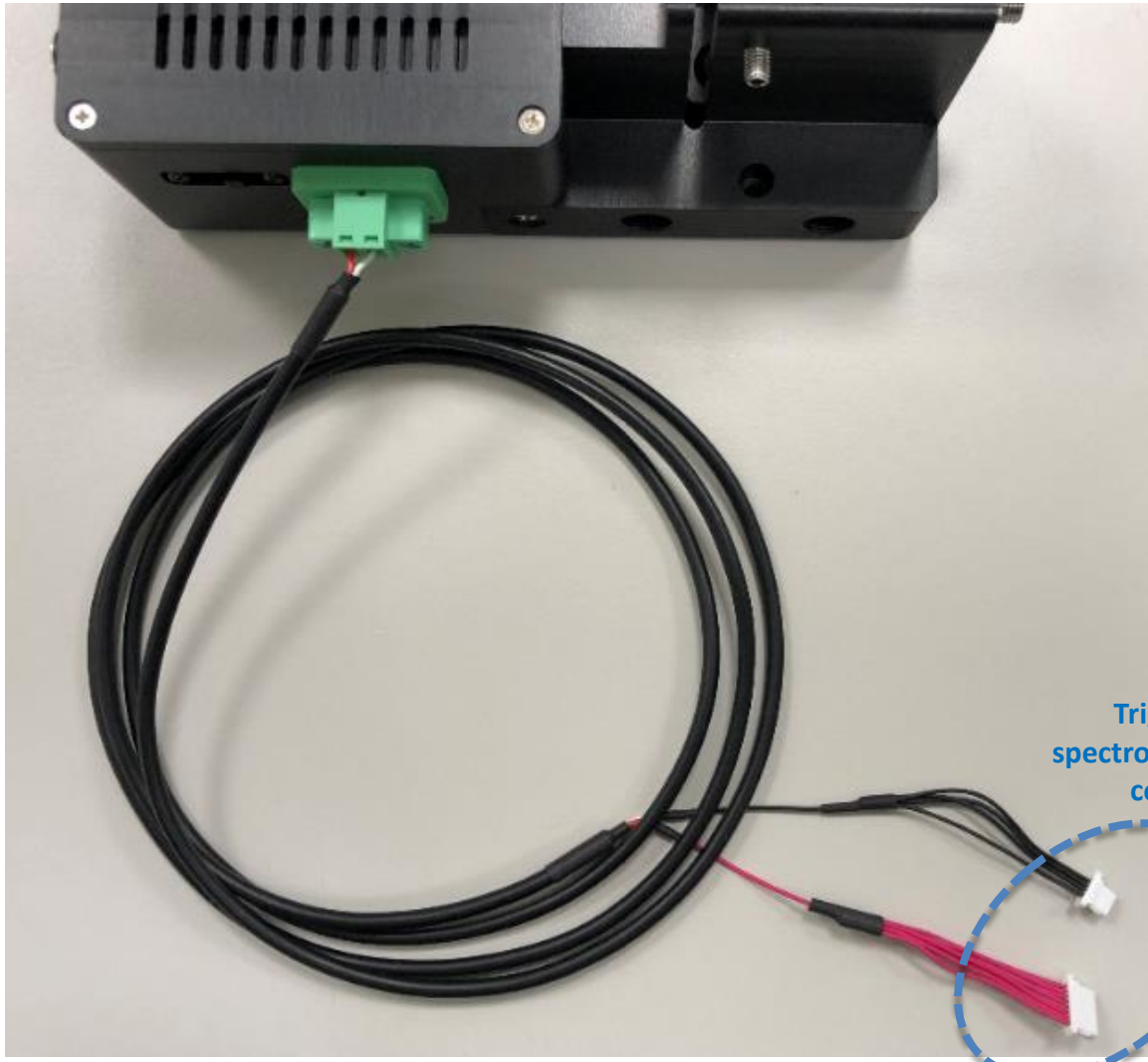
Water inlet



Water outlet

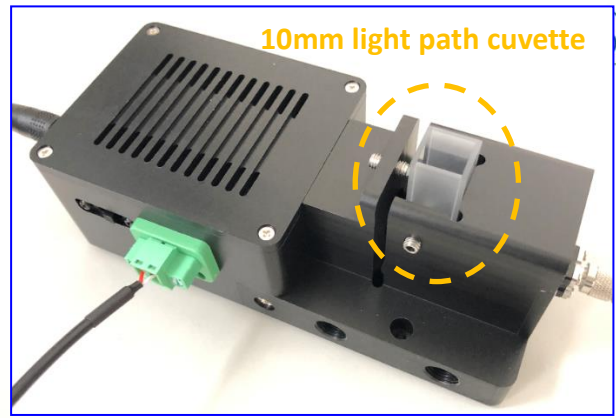
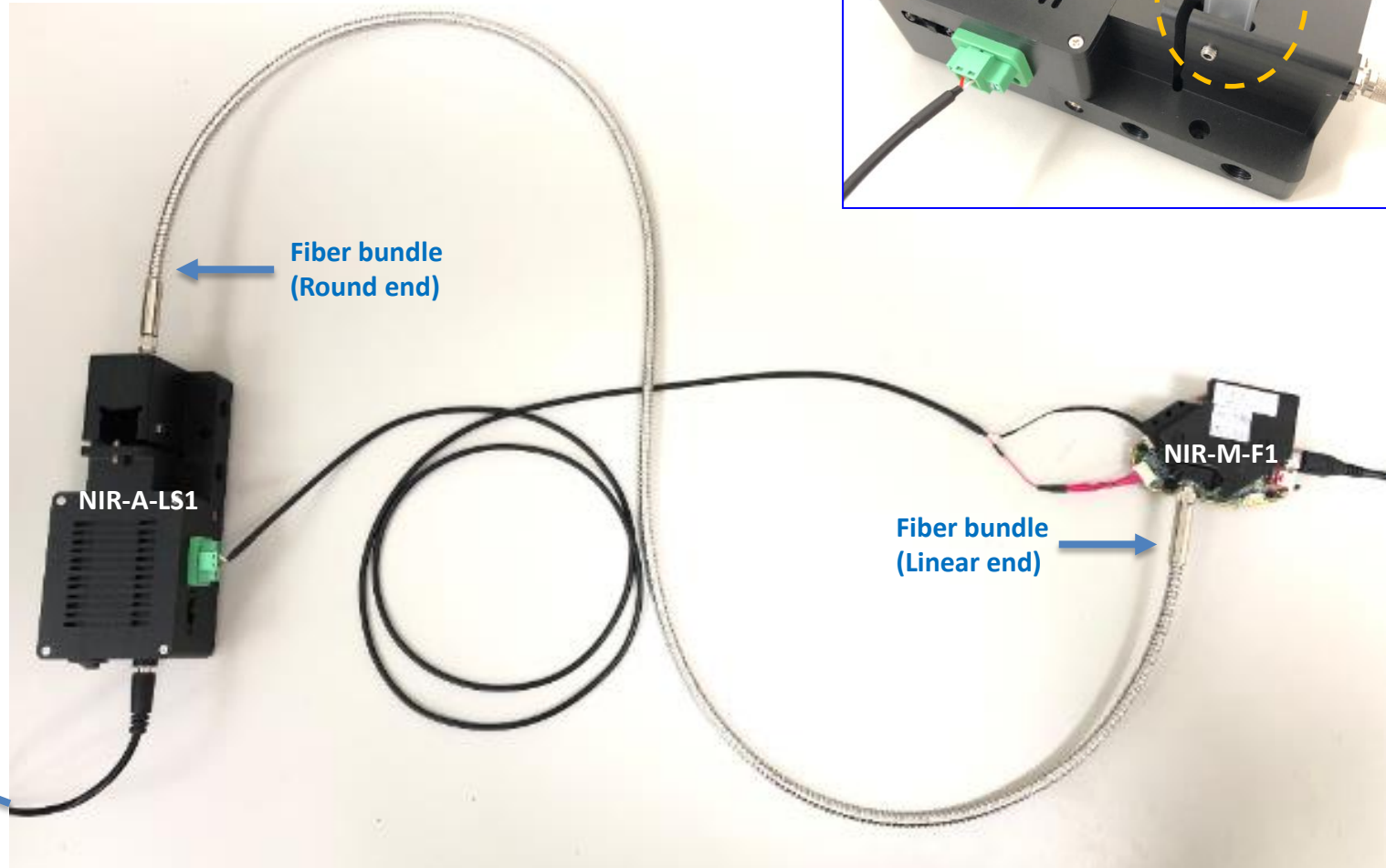
Note: The water source is used to heat the sample instead of cooling the device. If the sample is clear at room temperature, it is not necessary to use hot water to maintain the sample state. As another example, saturated fatty acids become solid at low temperatures. It must be heated to turn it into a liquid for transmission measurements. Samples can also be preheated by other heating equipment before being placed in the NIR-A-LS1.

External Trigger Interface



Triggered by spectrometer or host controller

Measurement Setup



Fiber bundle
(Round end)

NIR-A-LS1

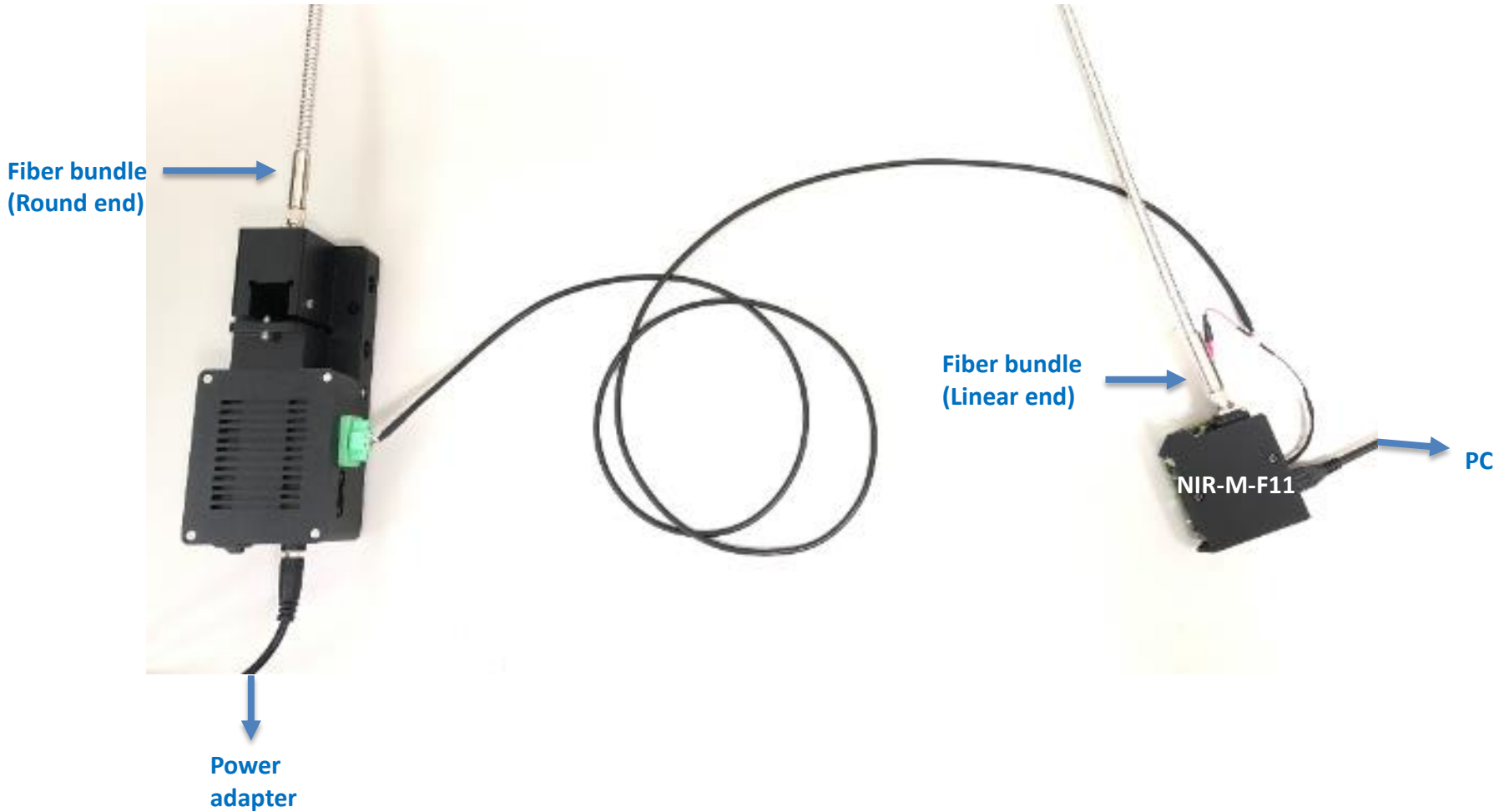
Power adapter

NIR-M-F1

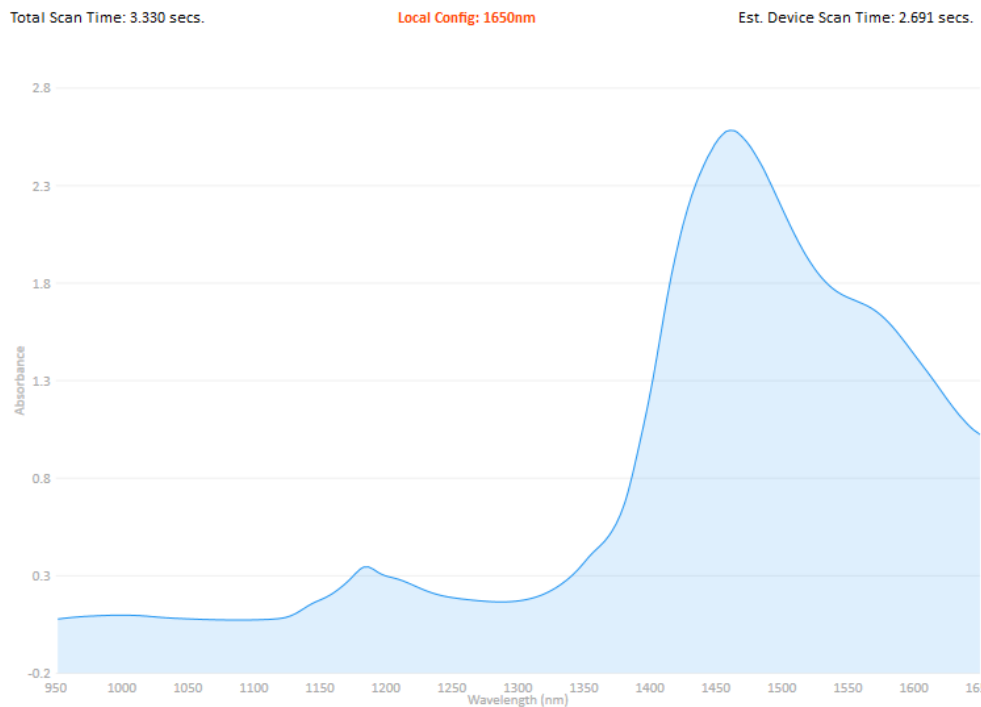
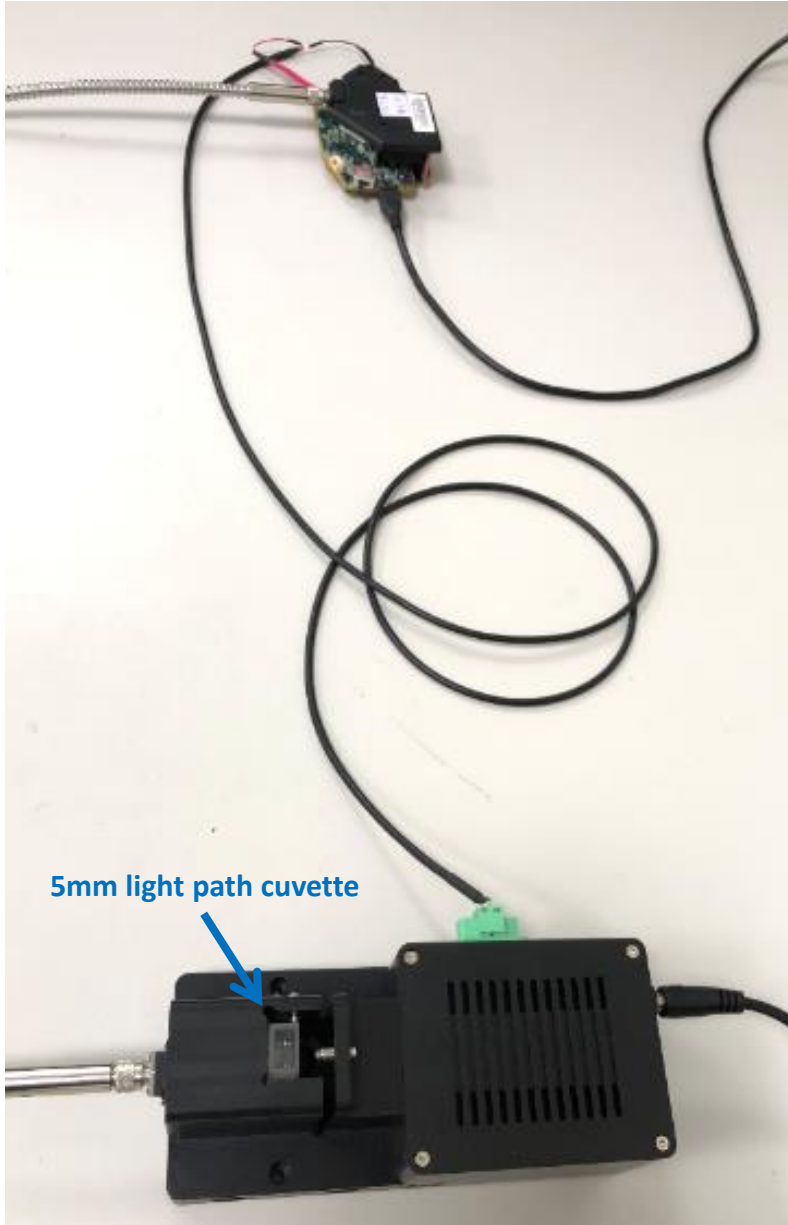
Fiber bundle
(Linear end)

PC

Measurement Setup



Example : F1 Spectrum of 95% alcohol



責任 · 創新 · 卓越 · 開創

Responsibility Innovation Superiority Entrepreneurship

Thank You!